



Le sweat à col rond femme en coton recyclé

Medium Fit

XS → 3XL

350 GSM

Description

Manches montées

Côtes 1x1 à l'encolure, aux poignets et à l'ourlet

Surpiqûre double centrée sur les coutures des épaules, emmanchures, poignets et ourlet

Bande de propreté intérieure au dos du col en chevron

Demi-lune en tissu principal au dos du col

Composition

Shell - Molleton brossé

50% Cotton - Recycled Ring Spun Carded, 50% Cotton - Organic Ring Spun Carded
- 350.0 GSM

Tissu lavé

Care instruction

Laver les couleurs similaires ensemble, ne pas repasser l'imprimé, laver et repasser sur l'envers.



Pays d'origine

Weaving : Bangladesh

Dyeing : Bangladesh

Assembly : Bangladesh



www.milko-tee.com

Whites

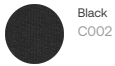


White
C001



Natural
Raw
C054

Colors



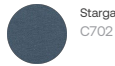
Black
C002



Anthracite
C253



Glazed
Green
C036



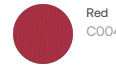
Stargazer
C702



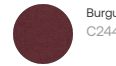
Worker
Blue
C088



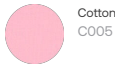
French
Navy
C727



Red
C004

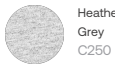


Burgundy
C244



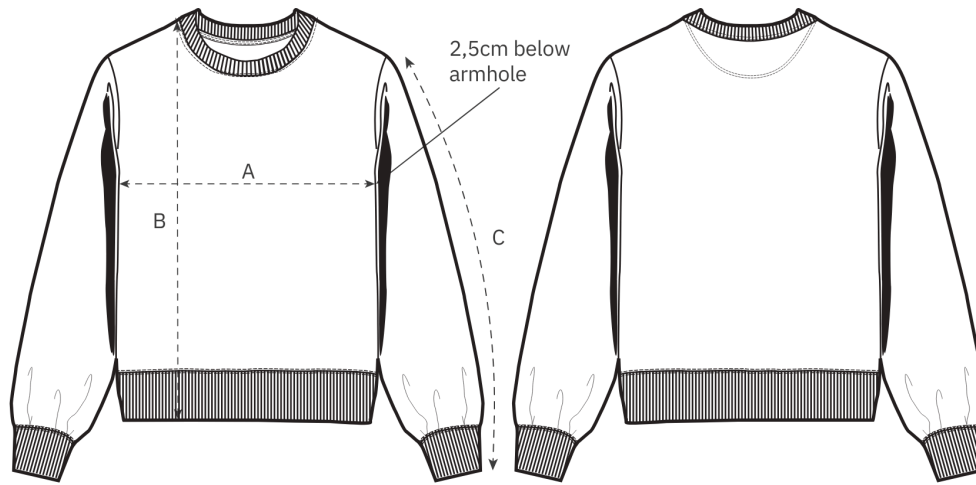
Cotton Pink
C005

Essential Heathers



Heather
Grey
C250

Guide des tailles



Front

Back

| Measurement in cm | XS | S | M | L | XL | XXL | 3XL |
|-------------------|------|----|------|----|------|------|------|
| A - Half Chest | 47 | 50 | 53 | 56 | 59 | 63 | 67 |
| B - Body Length | 61 | 64 | 66 | 68 | 70 | 72 | 74 |
| C - Sleeve Length | 59.5 | 61 | 62.5 | 64 | 65.5 | 65.5 | 65.5 |

Emballage

| Sizes | XS | S | M | L | XL | XXL | 3XL |
|--------------|----|----|----|----|----|-----|-----|
| Pieces / bag | 5 | 5 | 5 | 5 | 5 | 5 | 5 |
| Pieces / box | 20 | 20 | 20 | 20 | 20 | 20 | 10 |